

# CF-LA

**NEW**

RoHS Compliance



**Approvals**

C-US UL, UL : E43275  
ENEC : SE/05105-04

- UL
- C-US UL
- ENEC

**Features**

1. High in rush rocker switches
2. In rush 160A max.
3. Five kinds of terminal style
4. Temporarily dust proof type (IP40)
5. C-US UL, UL (TV-8), and ENEC listed.

**Specifications**

Rating	Max.	16A125V AC or 16A250V AC (Resistive load)
	Min.	AC/DC5V 10mA
Initial contact resistance	20mΩ max.	
Initial Dielectric strength	1500V AC 1minute.	
Initial insulation resistance	100MΩ min.	
Operating force	1~8N	
Electrical life	20,000 cycles	
Operating temperature range	-25~+85°C	
Storage temperature range	-40~+85°C	

**Part Numbering**

**CF-LA - 2 K Z2 - 1**

Series code      Number of poles      Switching function      Terminal style      Rocker design      Packaging spec

Fig.	Number of poles
1	1 pole
2	2 poles

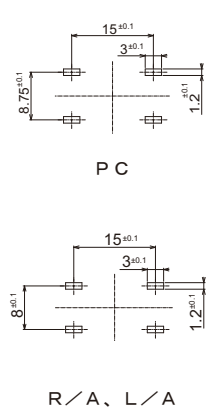
Code	Switching function
A	ON - OFF
K	ON - OFF

Code	Terminal style
C	P/C
C4	PC-R/A
C5	PC-L/A
L	Solder
Z2	TAB:#250

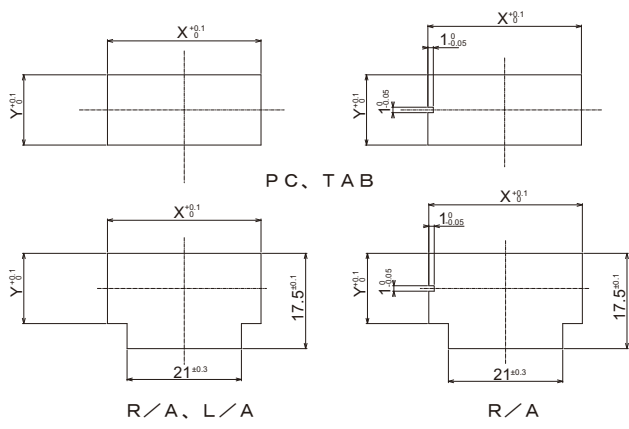
Fig.	Rocker design
1	Unfigured
2	●
3	○

Code	Packaging spec
Blank	Plastic bags
C	Card board tray

**PC Hole Layouts**



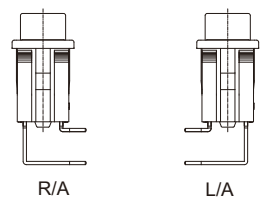
**Panel Cut-Out Dimensions**



Panel thickness	X	Y
0.75~1.25	28.2	12.9
1.25以上~2	28.4	12.9
2~3	28.8	12.9

**Terminal Styles**

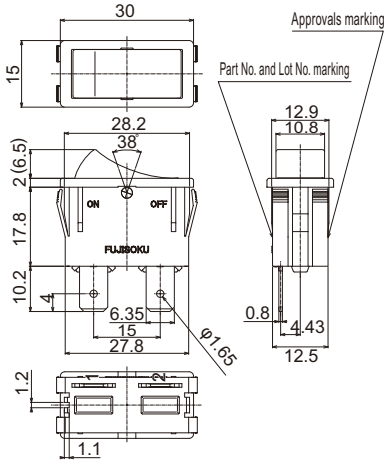
Solder (Style : L)	TAB#250 (Style : Z2)	P/C (Style : C)	R/A (Style : C4) L/A (Style : C5)



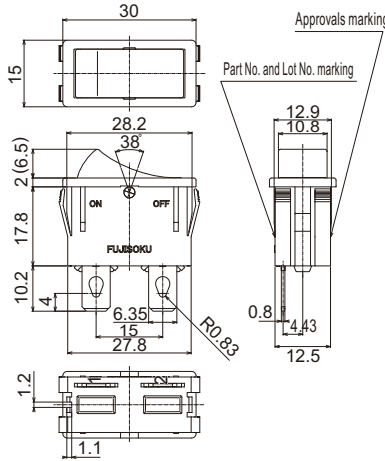
※ Only for 2 poles left angle terminal.

## Outline dimensions

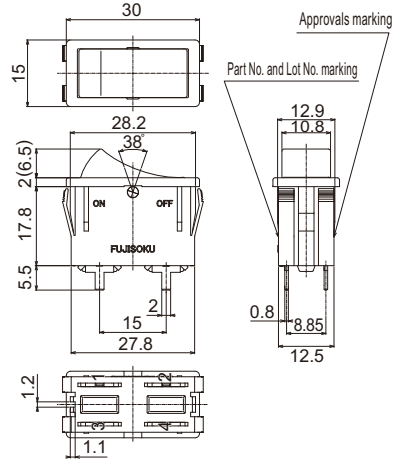
### ● Tab:#250 / 1 Pole



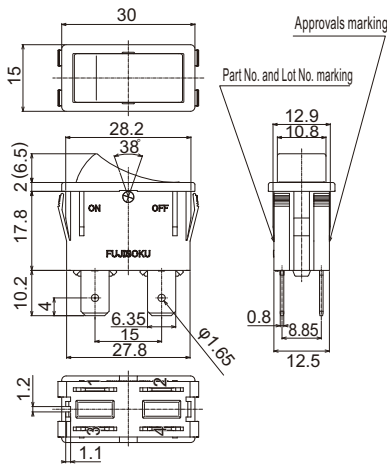
### ● Solder / 1 Pole



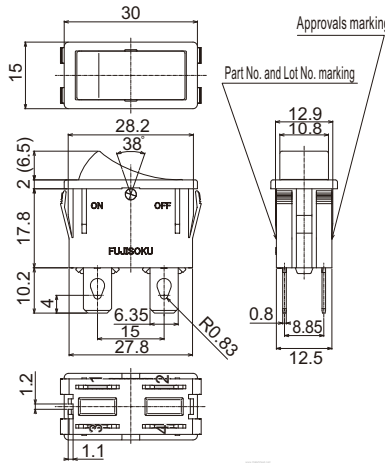
### ● P/C / 1 and 2 Poles



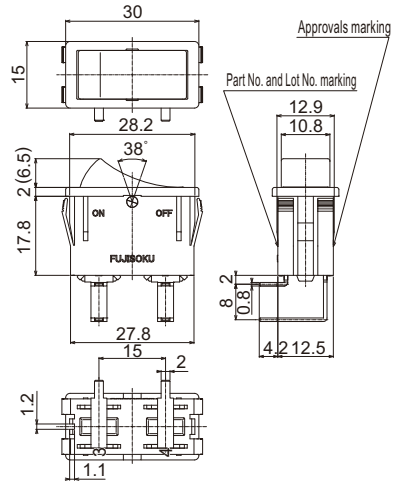
### ● Tab:#250 / 2 Poles



### ● Solder / 2 Poles



### ● PC-R/A / 2 Poles



## List of part numbers

Number of poles	Switching function	Terminal style	Rocker design			Pieces in package	
			Unfigured	●	○		
1 Pole	ON—OFF	P/C	CF-LA-1AC-1C	CF-LA-1AC-2C	CF-LA-1AC-3C	Card board tray 100 pcs./pack	
		PC-R/A	CF-LA-1AC4-1C	CF-LA-1AC4-2C	CF-LA-1AC4-3C		
		Solder	CF-LA-1AL-1C	CF-LA-1AL-2C	CF-LA-1AL-3C		
		Tab:#250	CF-LA-1AZ2-1C	CF-LA-1AZ2-2C	CF-LA-1AZ2-3C		
2 Poles	ON—OFF	P/C	CF-LA-2KC-1C	CF-LA-2KC-2C	CF-LA-2KC-3C		
		PC-R/A	CF-LA-2KC4-1C	CF-LA-2KC4-2C	CF-LA-2KC4-3C		
		PC-L/A	CF-LA-2KC5-1C	CF-LA-2KC5-2C	CF-LA-2KC5-3C		
		Solder	CF-LA-2KL-1C	CF-LA-2KL-2C	CF-LA-2KL-3C		
2 Poles	ON—OFF	Tab:#250	CF-LA-2KZ2-1C	CF-LA-2KZ2-2C	CF-LA-2KZ2-3C		
		P/C	CF-LA-1AC-1	CF-LA-1AC-2	CF-LA-1AC-3		Plastic bags 5 pcs./pack
		PC-R/A	CF-LA-1AC4-1	CF-LA-1AC4-2	CF-LA-1AC4-3		
		Solder	CF-LA-1AL-1	CF-LA-1AL-2	CF-LA-1AL-3		
1 Pole	ON—OFF	Tab:#250	CF-LA-1AZ2-1	CF-LA-1AZ2-2	CF-LA-1AZ2-3		
		P/C	CF-LA-2KC-1	CF-LA-2KC-2	CF-LA-2KC-3		
		PC-R/A	CF-LA-2KC4-1	CF-LA-2KC4-2	CF-LA-2KC4-3		
		PC-L/A	CF-LA-2KC5-1	CF-LA-2KC5-2	CF-LA-2KC5-3		
2 Poles	ON—OFF	Solder	CF-LA-2KL-1	CF-LA-2KL-2	CF-LA-2KL-3		
		Tab:#250	CF-LA-2KZ2-1	CF-LA-2KZ2-2	CF-LA-2KZ2-3		

## Soldering

### (1) Auto soldering

Device : Jet wave or dip type  
260°C 5~6sec Max.

● Preheat should be within 80-150°C, 180sec.

Applicable to PC terminals only.

### (2) Hand soldering

Device : Solder iron  
380°C Max. 3sec Max.

**COPAL ELECTRONICS** Group

FUJISOKU CORPORATION

